

A Frisco Community Scenario

The Frisco Story

Frisco is a walkable town and mountain community dramatically sited between Dillon Reservoir and soaring peaks, set within a region unsurpassed in natural beauty and outdoor opportunities. Frisco is a town with edges, town boundaries are formed in a deliberate way - the developed areas meet lands that will be protected in perpetuity to ensure resident's access to nature and the outdoors. The town greatly values a neighborhood feel: the community looks to enhance and protect this quality through capital investments in parks, trails, and connectivity. In Frisco, full-time and seasonal residents, workers, business operators, and visitors are all considered a part of the community. The town is proactively inclusive and welcoming. The Frisco setting, culture, and quality of life combine to create a true community.

While the town works to protect a unique character within Summit County and the region, there are also strong connections to the neighboring communities and stakeholders. Frisco benefits from the unparalleled outdoor setting, and residents recognize the importance of working collaboratively to protect and enhance the environment. The town and the region draw visitors from around the world to share in the local lifestyle. Visitors will continue to help provide an economic foundation that will sustain the Frisco community for the long term.

Frisco Characteristics

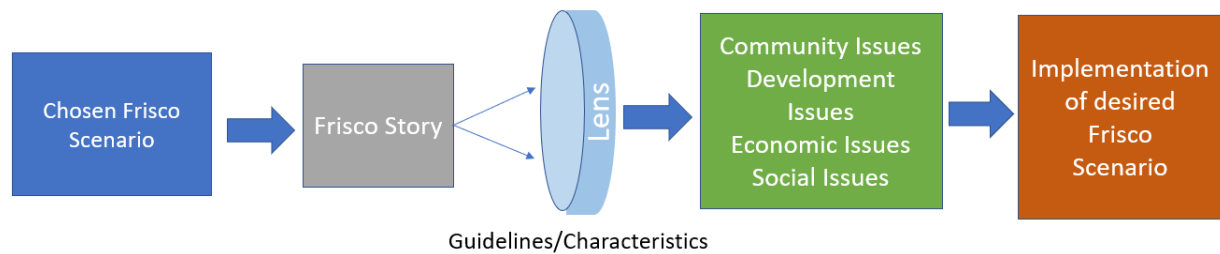
In Frisco, we are passionate about:

- The outdoor lifestyle
- Encouraging community expression of culture including art, music, the outdoor experience friendliness, and youthful creativity as a reflection of shared values
- The protection and stewardship of the environment
- The inclusive and welcoming traditions, and a desire to foster a strong connection between all members of the community

Frisco Guidelines

- A neighborhood feeling
- All community members are valued.
- There are connections to the county as a whole.
- Culture is an expression of residents.
- Importance is placed on the areas where nature meets the town.
- The community is inclusive and welcoming.
- Protection of community access to outdoors and nature
- Tourism is an economic building block.
- Walkability to enable connections within the community

Examples of Applying Scenario-based Guidelines to Town Decisions



 Scenario Lens ALL RIGHTS RESERVED – INSIGHTS COLLECTIVE

Reshaping the Events Program in Frisco

A Diverse Menu of Events	Application/Opportunities
All community members are valued	Manage a mix of events to address all members
Connection to the county as a whole	Draw from the county, not just the town, consider unique events that differentiate and build on Frisco character and values
Culture is an expression of residents	Continue to value and develop events that serve residents and express local culture.
Inclusive and welcoming	Portray Frisco values through events
Neighborhood feel	Are there added opportunities for neighborhood events to celebrate all the community? At the Marina, in the residential areas? Can they bring second homeowners and residents together?
Tourism as an economic building block	Recognize that some events may be more attractive to visitors and more visibly support a thriving economy but continue to manage those events so that they also meet other community objectives/values and add to the quality of life in the community.
Walkability to enable connections with the community	Encourage walking and bicycling to events, parking and circulation should be planned to protect neighborhoods, but also to encourage town-wide participation

Considering Uses at the Peninsula Recreation Area

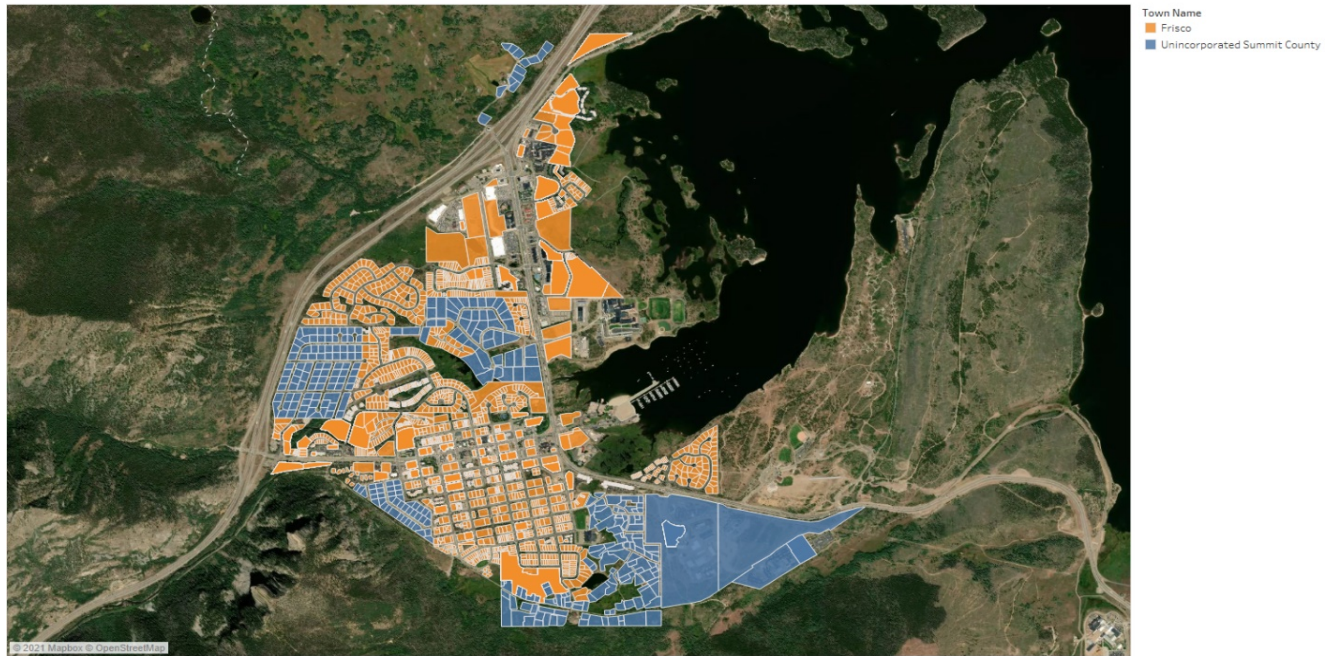
Peninsula Recreation Area- Comprehensive Vision & Project Implementation Plan	Application/Opportunities
All community members are valued	Residents and particularly youth are important
Connection to the county as a whole	Frisco maintains recreational choices which are not available at the capacity needed elsewhere
Culture is an expression of residents	An ice facility/surface would be a use that would fit the town's culture
Impact on boundaries	Is the Peninsula the best location for an ice facility/surface?
Inclusive and welcoming	Does an ice facility/surface invite the community to participate?
Neighborhood feel	Can this amenity provide the opportunity to support and create community and a neighborhood feel?
Protection of community access to outdoors and nature	This may bring a more diverse audience of community members to the Peninsula.
Walkability to enable to enable connections within the community	Walkability to the Peninsula will be increased with the completion of the Gap Project. How can more walking during the winter be encouraged?

Frisco Views – Two Ways of Visualizing the Town

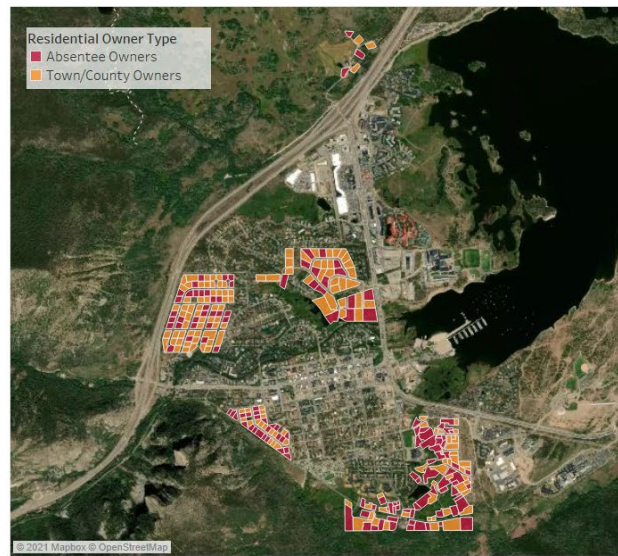
The illustrations below provide different views of Frisco. First, the Town is portrayed showing the clear edges that form the unique setting and shape Frisco's quality of life. Town land is differentiated from the unincorporated county enclaves.

Next, an image shows the mix of primary residents' and second homeowners' patterns throughout the town. As Frisco considers strategies for encouraging more community involvement and potentially more permanent residents, the existing patterns may help provide some guidance on what types of changes are appropriate and workable.

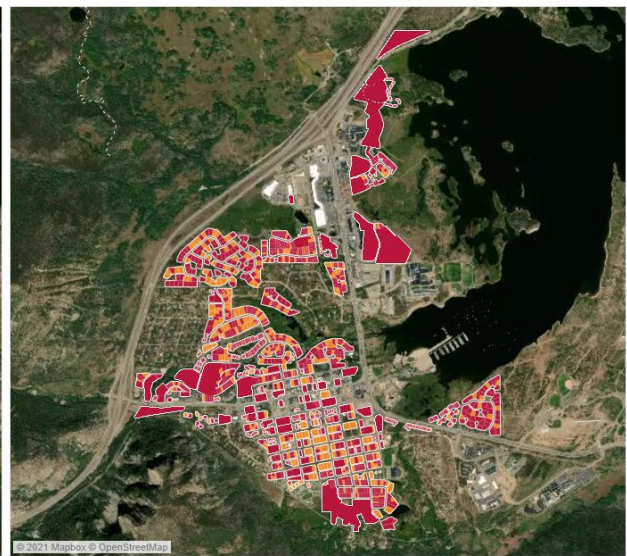
Town of Frisco and Unincorporated Summit County



Frisco Unincorporated Summit County by Owner Type



Town of Frisco by Owner Type



Source: Summit County Assessor's Database/Insights Collective. Subject to verification